

# REGISTRATION

ARTdeSUISSE+2026

LUZERN

**AUTUMN Edition**

**26 - 29 November 2026**

**Application as an Exhibitor**





**DATES**

**26 - 29 November 2026**

**AUTUMN EDITION**

Application deadline:

30 September 2026

**SET-UP**

Thursday

26 November, 08 a.m. - 15 p.m.

**OPENING HOURS**

**Thursday**

*Vernissage* **26 November, 5 – 10 p.m.**

**Friday**

**27 November, 10 a.m. – 8 p.m.**

**Saturday**

**28 November, 10 a.m. – 8 p.m.**

**Sunday**

**29 November, 10 a.m. – 6 p.m.**

**DISMANTLING**

Sunday

29 November, 6 – 8 p.m.

**VENUE**

**KORNSCHÜTTE** (Town-hall Luzern)  
Kornmarkt 3, 6004 – Luzern, Switzerland

**ORGANIZER**

Cosmopolitan Art GmbH      CHE-282.871.031  
Juchstrasse 9, CH - 8173 Neerach  
www.artdesuisse.art

Gabriella Prokai

+41 79 946 75 50  
info@artdesuisse.art



**INFORMATION REQUIRED :**

- **Completed registration form** (by WhatsApp, e-mail or post)
- **Full name:** .....
- **Artist name** (if any):.....
- **Adress / Postadress** (Street / No.):.....  
(Country / Zip Code / City):.....
- **Mobile phone No:**..... **E-Mail:**.....
- **Website:**.....
- **Instagram:**..... **Facebook:**.....

Please tick the desired wall or sculpture areas on page 4.  
Several walls can be booked at the same time.

**Deadline for catalogue entry 18 September 2026 Send CV & photo of 1 artwork by email.**

- Name of the work / size / technique / year of creation,
  - Artist biography (max. 8-10 sentences)
- You will receive a separate form for the catalogue contribution.

.....  
Date / City

.....  
Signature

.....  
Name block lettering

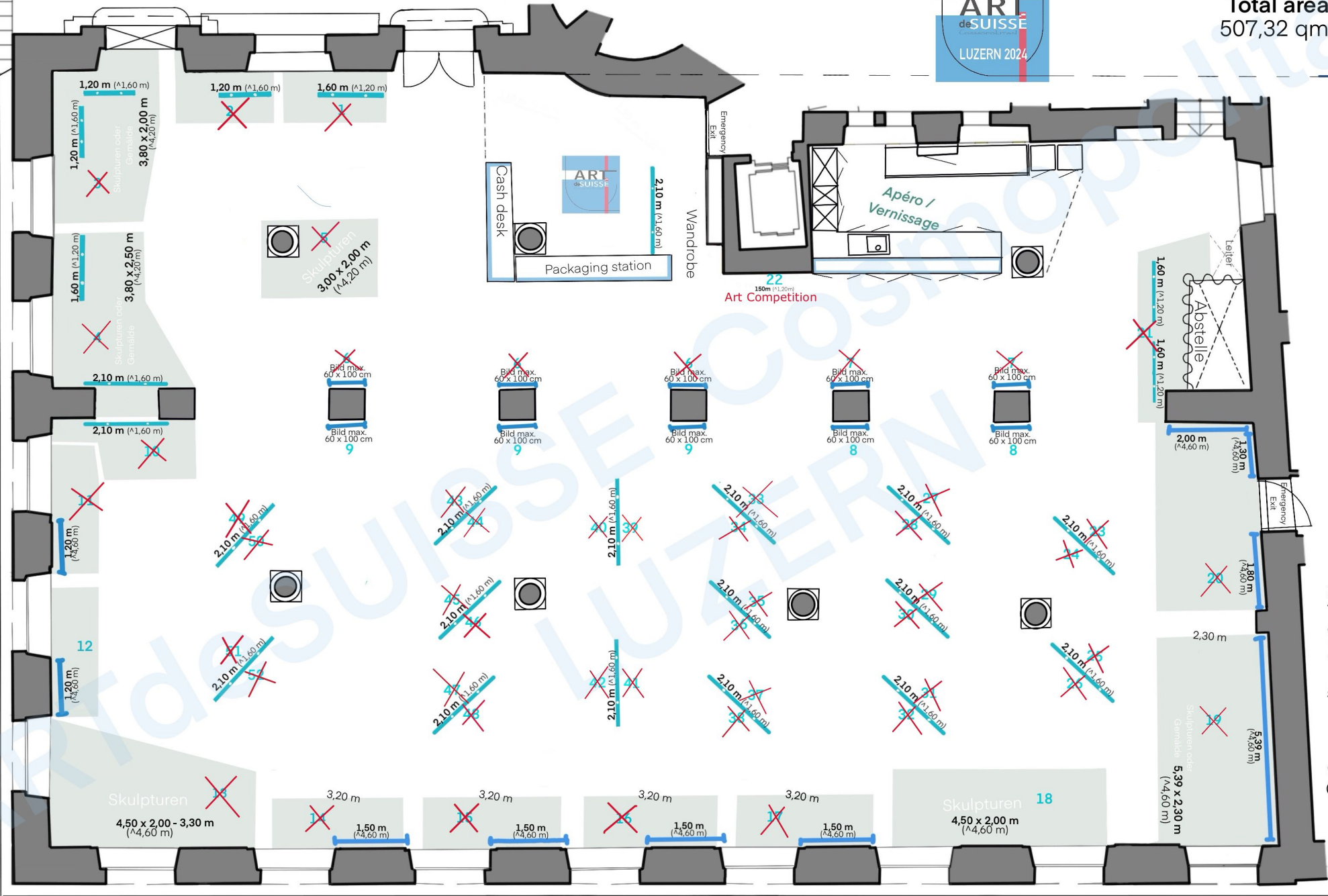
Kornmarkt

Venue: **Kornschtütte** Kornmarkt 3, 6004 Luzern



Total area  
507,32 qm

Entrance



7,68 m

7%

18,77 m

10,33 m

© Cosmopolitan Art GmbH

Unter der Egg 29,48 m

Rathaussteg

Skulpturen  
4,50 x 2,00 - 3,30 m  
(^4,60 m)

1,20 m (^1,60 m)  
1,20 m (^1,60 m)  
3,80 x 2,00 m  
(^4,20 m)

1,60 m (^1,20 m)  
3,80 x 2,50 m  
(^4,20 m)

2,10 m (^1,60 m)  
2,10 m (^1,60 m)

1,20 m (^4,80 m)  
12

Skulpturen 18  
4,50 x 2,00 m  
(^4,60 m)

Skulpturen  
3,00 x 2,00 m  
(^4,20 m)

Bild max.  
60 x 100 cm  
9

Bild max.  
60 x 100 cm  
9

Bild max.  
60 x 100 cm  
9

Bild max.  
60 x 100 cm  
8

Bild max.  
60 x 100 cm  
8

2,10 m (^1,60 m)

2,10 m (^1,60 m)

2,10 m (^1,60 m)

2,10 m (^1,60 m)

2,10 m (^1,60 m)

2,10 m (^1,60 m)

2,10 m (^1,60 m)

2,10 m (^1,60 m)

2,10 m (^1,60 m)

2,10 m (^1,60 m)

2,10 m (^1,60 m)

2,10 m (^1,60 m)

3,20 m  
1,50 m (^4,60 m)

3,20 m  
1,50 m (^4,60 m)

3,20 m  
1,50 m (^4,60 m)

3,20 m  
1,50 m (^4,60 m)

1,60 m (^1,20 m)  
1,60 m (^1,20 m)

2,00 m (^4,60 m)

1,30 m (^4,60 m)

1,80 m (^4,60 m)

2,30 m

Skulpturen oder  
Gemälde  
5,39 x 2,30 m  
(^4,60 m)

Cash desk

Packaging station

Emergency  
Exit

Wandrobe

Apéro /  
Vernissage

22  
150m (^1,20m)  
Art Competition

Emergency  
Exit

Abstelle  
Leitert

Total 507, 32 qm

**STONE WALLS** including 1 table + 1 chair

Exhibition-area (No.)	ART	Width /Height total (meters)	PRICE (CHF)	Occupancy	
				Spring Edition 19 - 22 March 2026	Autumn Edition 26 - 29 November 2026
* Stone wall with hanging system	<b>PAINTINGS, DRAWINGS PHOTOGRAPHIC ART and/or SCULPTURES</b>			<b>Applications period closed</b>	Please tick your selection
<b>1</b>	Paintings, D., Ph.	1,60 / 1,20	520	<i>Reserved</i>	<i>Reserved</i>
<b>2</b>	Paintings, D., Ph.	1,20 / 1,60	520	<i>Reserved</i>	<i>Reserved</i>
<b>3</b>	Paintings, D., Ph. and/or Sculptures (height 4,20m)	2x 1,20/1,60 (3,80 x 2,00)	1060	<i>Reserved</i>	<i>Reserved</i>
<b>4</b>	Paintings, D., Ph. and/or Sculptures (height 4,20m)	2,10/160 + 160/120 (3,80 x 2,50)	1'200	<i>Reserved</i>	<i>Reserved</i>
<b>5</b>	Sculptures (height 4,20m)	3,00 x 2,00	700		<i>Reserved</i>
<b>*6</b>	3 Paintings, D., Ph. max.	0,60 x 1,00	630	<i>Reserved</i>	<i>Reserved</i>
<b>*7</b>	2 Paintings, D., Ph. max.	0,60 x 1,00	420	<i>Reserved</i>	<i>Reserved</i>
<b>*8</b>	2 Paintings, D., Ph. max.	0,60 x 1,00	420	<i>Reserved</i>	
<b>*9</b>	3 Paintings, D., Ph. max.	0,60 x 1,00	630	<i>Reserved</i>	
<b>*10</b>	Paintings, D., Ph.	2,10 / 1,60	630	<i>Reserved</i>	<i>Reserved</i>
<b>*11</b>	Paintings, D., Ph.	1,20 / 3,00	630	<i>Reserved</i>	<i>Reserved</i>
<b>*12</b>	Paintings, D., Ph.	1,20 / 3,00	630	<i>Reserved</i>	
<b>*13</b>	Sculptures (height 4,60m)	4,50 x 2,00	990		<i>Reserved</i>
<b>*14</b>	Paintings, D., Ph. and/or Sculptures (height 4,60m)	1,50 / 3,00 3,20 x 1,50	790	<i>Reserved</i>	<i>Reserved</i>
<b>*15</b>	Paintings, D., Ph. and/or Sculptures (height 4,60m)	1,50 / 3,00 3,20 x 1,50	790	<i>Reserved</i>	<i>Reserved</i>
<b>*16</b>	Paintings, D., Ph. and/or Sculptures (height 4,60m)	1,50 / 3,00 3,20 x 1,50	790	<i>Reserved</i>	<i>Reserved</i>
<b>*17</b>	Paintings, D., Ph. and/or Sculptures (height 4,60m)	1,50 / 3,00 3,20 x 1,50	790	<i>Reserved</i>	<i>Reserved</i>
<b>*18</b>	Sculptures (Höhe 4,60m)	4,50 x 2,00	950		
<b>*19</b>	Paintings, D., Ph. and/or Sculptures (height 4,60m)	5,39 / 4,00 5,39 x 2,30	1'620	<i>Reserved</i>	<i>Reserved</i>
<b>*20</b>	Paintings, D., Ph.	5,10 / 4,00	1'400	<i>Reserved</i>	<i>Reserved</i>
<b>21</b>	Paintings, D., Ph.	3,20 x 1,20	1'060	<i>Reserved</i>	<i>Reserved</i>
<b>22</b>	Paintings, D., Ph. max.	1,50 x 1,00		<i>ART Competition</i>	

An additional CHF 90 is charged per exhibitor. It is used to finance further PR campaigns such as posters, online catalogue and other advertising measures. This is an essential component for a successful exhibition.

With this payment, all exhibitors make a proportional contribution - regardless of the size or quantity of the exhibition space.

The stone walls are equipped with a crossbar under the ceiling to which synthetic ropes can be attached.



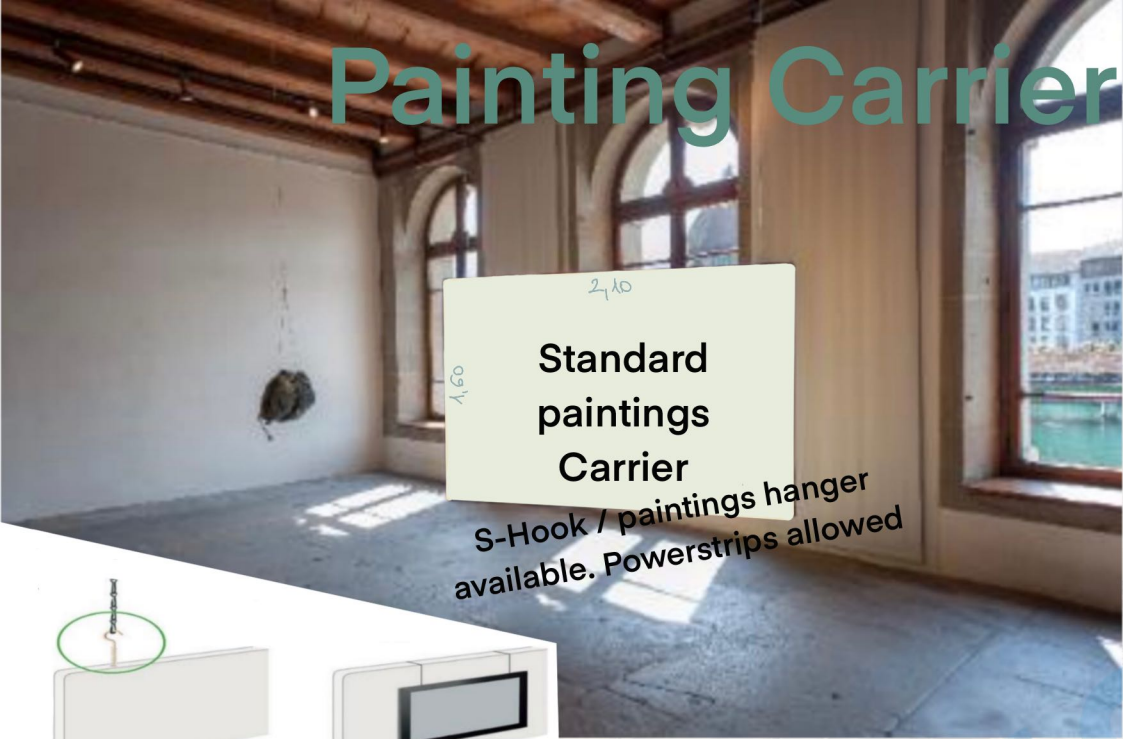
**HALL**

incl. 1/2 table + various seating options in the hall

Exhibition-area (No.)	ART	Width / Height total (meters)	PRICE (CHF)	Occupancy	
				Spring Edition 19 - 22 March 2026	Autumn Edition 26 - 29 November 2026
Hanging panels (picture carrier)	<b>PAINTINGS, DRAWINGS PHOTOGRAPHIC ART and/or SCULPTURES</b>			<b>Applications period closed</b>	Please tick your selection
<b>23</b>	Paintings, D., Ph.	2,10 / 1,60	570	<i>Reserved</i>	<i>Reserved</i>
<b>24</b>	Paintings, D., Ph.	2,10 / 1,60	570	<i>Reserved</i>	<i>Reserved</i>
<b>25</b>	Paintings, D., Ph.	2,10 / 1,60	570	<i>Reserved</i>	<i>Reserved</i>
<b>26</b>	Paintings, D., Ph.	2,10 / 1,60	570	<i>Reserved</i>	<i>Reserved</i>
<b>27</b>	Paintings, D., Ph.	2,10 / 1,60	570	<i>Reserved</i>	<i>Reserved</i>
<b>28</b>	Paintings, D., Ph.	2,10 / 1,60	570	<i>Reserved</i>	<i>Reserved</i>
<b>29</b>	Paintings, D., Ph.	2,10 / 1,60	570	<i>Reserved</i>	<i>Reserved</i>
<b>30</b>	Paintings, D., Ph.	2,10 / 1,60	570	<i>Reserved</i>	<i>Reserved</i>
<b>31</b>	Paintings, D., Ph.	2,10 / 1,60	570	<i>Reserved</i>	<i>Reserved</i>
<b>32</b>	Paintings, D., Ph.	2,10 / 1,60	570	<i>Reserved</i>	<i>Reserved</i>
<b>33</b>	Paintings, D., Ph.	2,10 / 1,60	570	<i>Reserved</i>	<i>Reserved</i>
<b>34</b>	Paintings, D., Ph.	2,10 / 1,60	570	<i>Reserved</i>	<i>Reserved</i>
<b>35</b>	Paintings, D., Ph.	2,10 / 1,60	530	<i>Reserved</i>	<i>Reserved</i>
<b>36</b>	Paintings, D., Ph.	2,10 / 1,60	570	<i>Reserved</i>	<i>Reserved</i>
<b>37</b>	Paintings, D., Ph.	2,10 / 1,60	570	<i>Reserved</i>	<i>Reserved</i>
<b>38</b>	Paintings, D., Ph.	2,10 / 1,60	570	<i>Reserved</i>	<i>Reserved</i>
<b>39</b>	Paintings, D., Ph.	2,10 / 1,60	570	<i>Reserved</i>	<i>Reserved</i>
<b>40</b>	Paintings, D., Ph.	2,10 / 1,60	570	<i>Reserved</i>	<i>Reserved</i>
<b>41</b>	Paintings, D., Ph.	2,10 / 1,60	570	<i>Reserved</i>	<i>Reserved</i>
<b>42</b>	Paintings, D., Ph.	2,10 / 1,60	570	<i>Reserved</i>	<i>Reserved</i>
<b>43</b>	Paintings, D., Ph.	2,10 / 1,60	570	<i>Reserved</i>	<i>Reserved</i>
<b>44</b>	Paintings, D., Ph.	2,10 / 1,60	570	<i>Reserved</i>	<i>Reserved</i>
<b>45</b>	Paintings, D., Ph.	2,10 / 1,60	570	<i>Reserved</i>	<i>Reserved</i>
<b>46</b>	Paintings, D., Ph.	2,10 / 1,60	530	<i>Reserved</i>	<i>Reserved</i>
<b>47</b>	Paintings, D., Ph.	2,10 / 1,60	570	<i>Reserved</i>	<i>Reserved</i>
<b>48</b>	Paintings, D., Ph.	2,10 / 1,60	570	<i>Reserved</i>	<i>Reserved</i>
<b>49</b>	Paintings, D., Ph.	2,10 / 1,60	570	<i>Reserved</i>	<i>Reserved</i>
<b>50</b>	Paintings, D., Ph.	2,10 / 1,60	570	<i>Reserved</i>	<i>Reserved</i>
<b>51</b>	Paintings, D., Ph.	2,10 / 1,60	570	<i>Reserved</i>	<i>Reserved</i>
<b>52</b>	Paintings, D., Ph.	2,10 / 1,60	570	<i>Reserved</i>	<i>Reserved</i>

Last update : 12. 04. 2026

# Painting Carrier



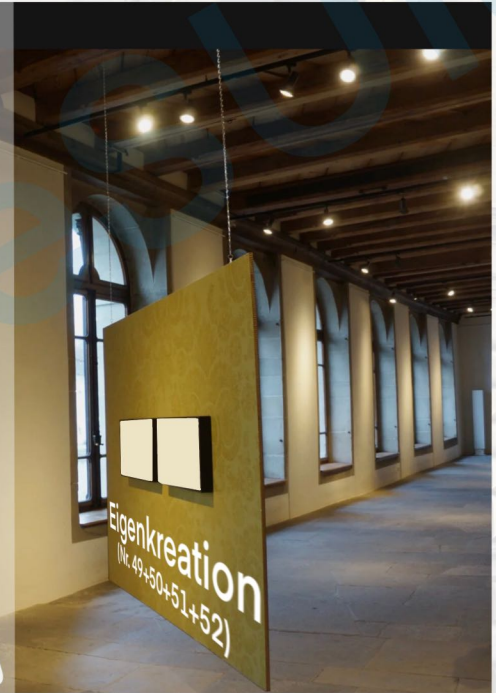
2,10  
1,60  
**Standard paintings Carrier**  
S-Hook / paintings hanger available. Powerstrips allowed



Can be hung on both sides



1,20  
1,60  
**Standard paintings Carrier**



## WHAT TO EXPECT – THE TOWN HALL AT KORNMARKT - KORNSCHÜTTE

The Kornschütte is a centrally located, publicly accessible and prestigious 507 square metre room with a historical background. The Renaissance building is rightly regarded as one of the most beautiful public buildings in Switzerland. Its magnificent location is in no way inferior. The town hall stands majestically in the heart of the old town on the River Reuss. The building is a listed building.



### EQUIPMENT & SERVICES

- 25 light tracks with 3-4 ceiling spots each
- 1 chair or seat for each artist and a small table for advertising material
- large ladders
- Enough picture hangers for hanging your works
- free coffee, water, white and red wine, sparkling wine until the end of the exhibition
- Storage of packaging material (max. one large Ikea bag)
- Support with hanging (St Petersburg hanging is not accepted)
- Vernissage with aperitif (finger food, wine, sparkling wine/Prosecco, soft drinks, etc.)
- Publication in various regional newspapers, as well as in social media, flyers and posters, various cultural and event calendars.
- 50 invitation cards/flyers will be sent to you by post
- Personalised banners, name badges, 1 double page per exhibitor in the exhibition catalogue (CV, contact details and a photo of your work)
- A fully supervised exhibition without compulsory attendance
- Cash desk with packing station
- Sales processing by Cosmopolitan Art GmbH, if desired. (TWINT, major credit cards).
- Expert advice for prospective buyers

### SALE ARTWORKS

The sales commission is 10% of the sales price (incl. credit card commission). The sale can also be processed independently by the participant. An own credit card system is recommended (SlumUp)

### PAYMENT TERMS

Upon receipt of your completed and signed registration form, the invoice will be issued and sent. Once ARTdeSUISSE has received payment, the reservation is confirmed. You will then receive the exhibition regulations and other documents. Payments may only be made directly by the contractual partner. Payments from third party accounts will not be accepted.

### WARRANTY

In the event of a postponement or cancellation of the booked event, your deposit will be refunded in full.

### CANCELLATION by artists

You will receive a refund of 50% of the amount paid by the deadline.

.....  
Date / City

.....  
Signature

## CONDITIONS OF PARTICIPATION

The organizer reserves the right to reject applicants. There is no entitlement to compensation. The organizer is solely responsible for the selection of exhibitors. There is no entitlement to admission to participation and rejected applications/applications do not require any justification.

The assembly and presentation of the artworks is the responsibility of the exhibitor. Drilling into the walls and picture carriers, hammering in nails is strictly forbidden! (It is only possible to use the image carrier, power strips are allowed). If the weight of the exhibits or other items exceeds 10 kg, this must be reported at the time of concept submission and confirmed in writing by the organizer.

Obligation to display prices: the exhibitor is obliged to indicate the sales prices of the works of art in Swiss francs (CHF). Prices must be announced in an easily accessible and legible form (you will receive a price tag in front of you).

Pictures may not be presented standing on the floor.

The organizer or its service provider assumes no responsibility for incorrect or inadequate data, images, photos and texts.

The organizer cannot give any guarantees for the business success of individual exhibitors or for a certain number of visitors.

The exhibitor is liable for any damage caused by him/her or a person commissioned by him/her to stands, installations, persons or goods of third parties.

The organizer is not liable for claims for damages on the part of the exhibitor. The organizer is not liable for loss of sales profit for any reason whatsoever.

The organizer is not liable for loss, damage, destruction, disappearance, theft of exhibited or non-exhibited exhibits, materials, stand materials or personal items.

The exhibitor undertakes to comply with the current requirements for implementation and delivery / collection.

Stand occupancy: If the exhibitor did not appear at the venue on the day of set-up according to the delivery date, the organizer can freely dispose of the exhibition stand.

The exhibitor may not make the area to which he/she is entitled for unauthorised use by third parties. In the event of an exhibitor's withdrawal, the stand costs will not be refunded.

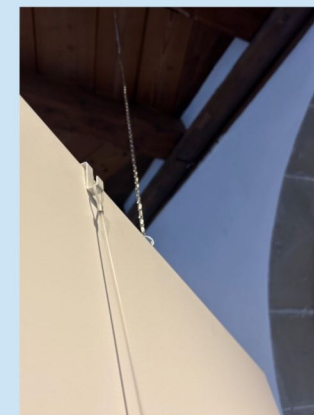
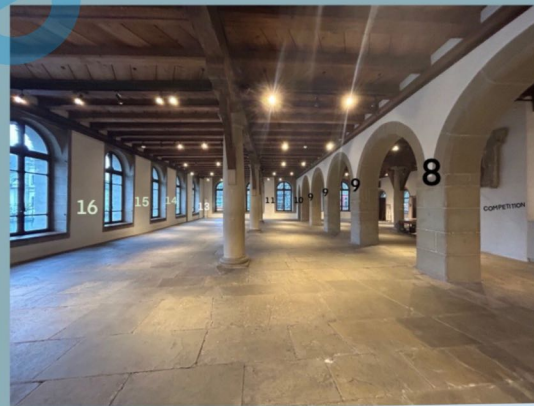
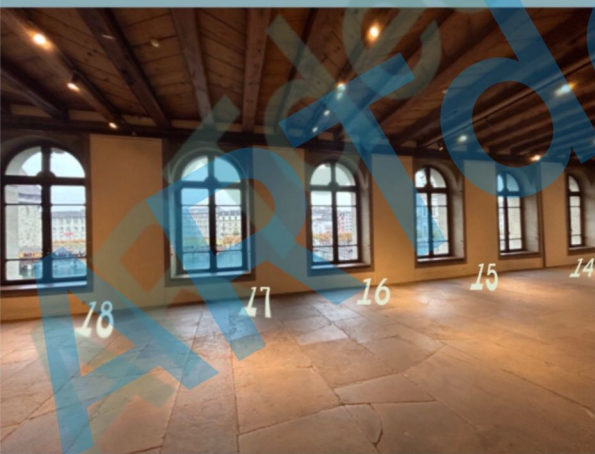
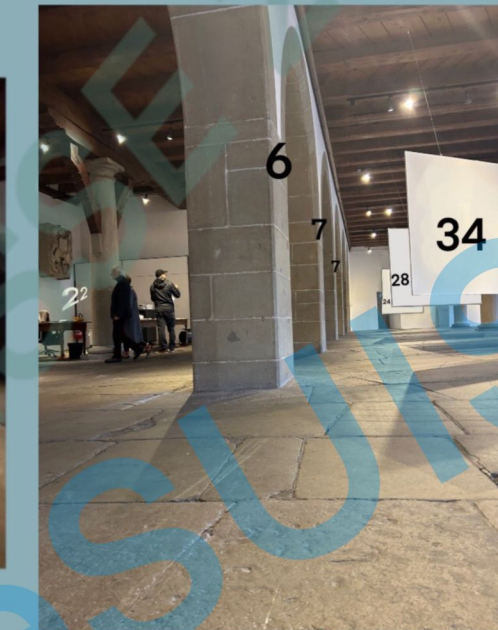
The exhibitor declares that he/she has read the Terms and Conditions of Participation, accepts them in their entirety and agrees that photos and videos of his/her person and his/her artworks may be used in media and social networks.

Place of jurisdiction: District court of Dielsdorf.

.....  
Date / City

.....  
Signature





Possibilities to hang  
with Artwork hook (100 pcs. available)

Artwork carrier  
Thickness 19 mm, weight 7 - 11 kg

STONE WALLS  
example

Suspension Triangles (ca. 5x5x5 cm)  
for gluing 184 pcs. available

Carrying capacity  
Rail suspension ceiling : one hook carries max. 12 kg  
Chain: one chain carries max. 4 kg